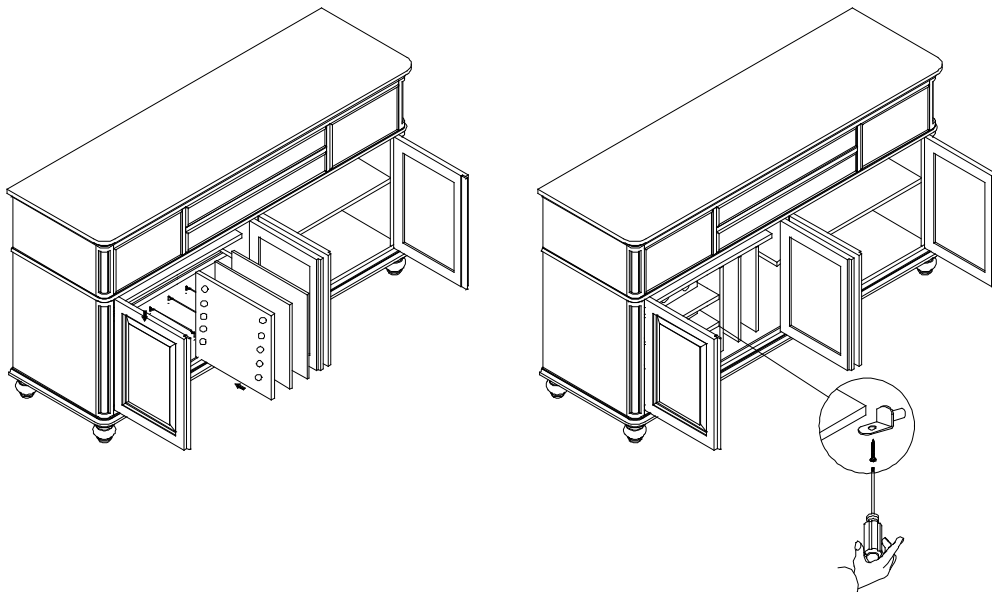


## **Customer Notice**

This unit includes an adjustable shelf (shelves) and a vertical divider (dividers) that had been packed in an individual box. Please follow below steps during assembly. This is a very simple process that does not require any technical knowledge.

Note 1: You need to assemble the vertical dividers first.

Note 2: Phillips head screwdriver required for assembly.



To reposition shelf (shelves), open doors, remove wood screws, shelf and shelf pins. Locate the desired position of the shelves. Reinsert shelf pins in corresponding holes. Place shelf on shelf pins, fasten with wood screws using a Phillips head screwdriver.