

INSTRUCTION SHEET

Desk

Thank you for purchasing this quality product. Be sure to check all packing material carefully for small parts that may have come loose inside the carton during shipment.

Caution: (1) These parts are cumbersome and heavy. This product can best be assembled with the assistance of one or more persons in order to prevent personal injury and to insure parts are not damaged during the assembly process. If dirty, clean finished parts with mild dishwashing liquid and water solution applied on damp cloth. Cloth should not be excessively wet. Polish finish with soft cloth and an industry recognized furniture polish.

(2) To prevent damage to your floor or carpet, please check the bottom of each piece of furniture for stain residue and rough surfaces and also check for staples or nails left after removing the packaging material. The manufacturer will not be held responsible if preventative steps are not taken prior to installation.

(3) Unpack and dispose of all packing material but be careful not to throw away any assembly parts or hardware. Read the instruction sheet and parts list carefully. Remove all staples and screws used for packaging carefully using pliers and or screwdrivers to prevent injury and scratching or damaging flooring.

(4) During normal use everyday, screws, bolts, nuts and wooden plugs may loosen up. They should be periodically inspected and re-tightened to prevent damage to the furniture and (or) personal property or cause injury. Always check to be sure all hardware on this list and the above mentioned components is attached to the furniture properly and kept tightened at all times.

PARTS LIST:

#	Description	Qty.	#	Description	Qty.
A	Top	1 pc	B	Side frame	1 pc
C	Drawer Chest	1 pc	D	Connecting Rail	1 pc
E	Hardware Package	1 bag	F	File Bar	2 pcs

Assembly Procedure: (Please follow the sketches below.)

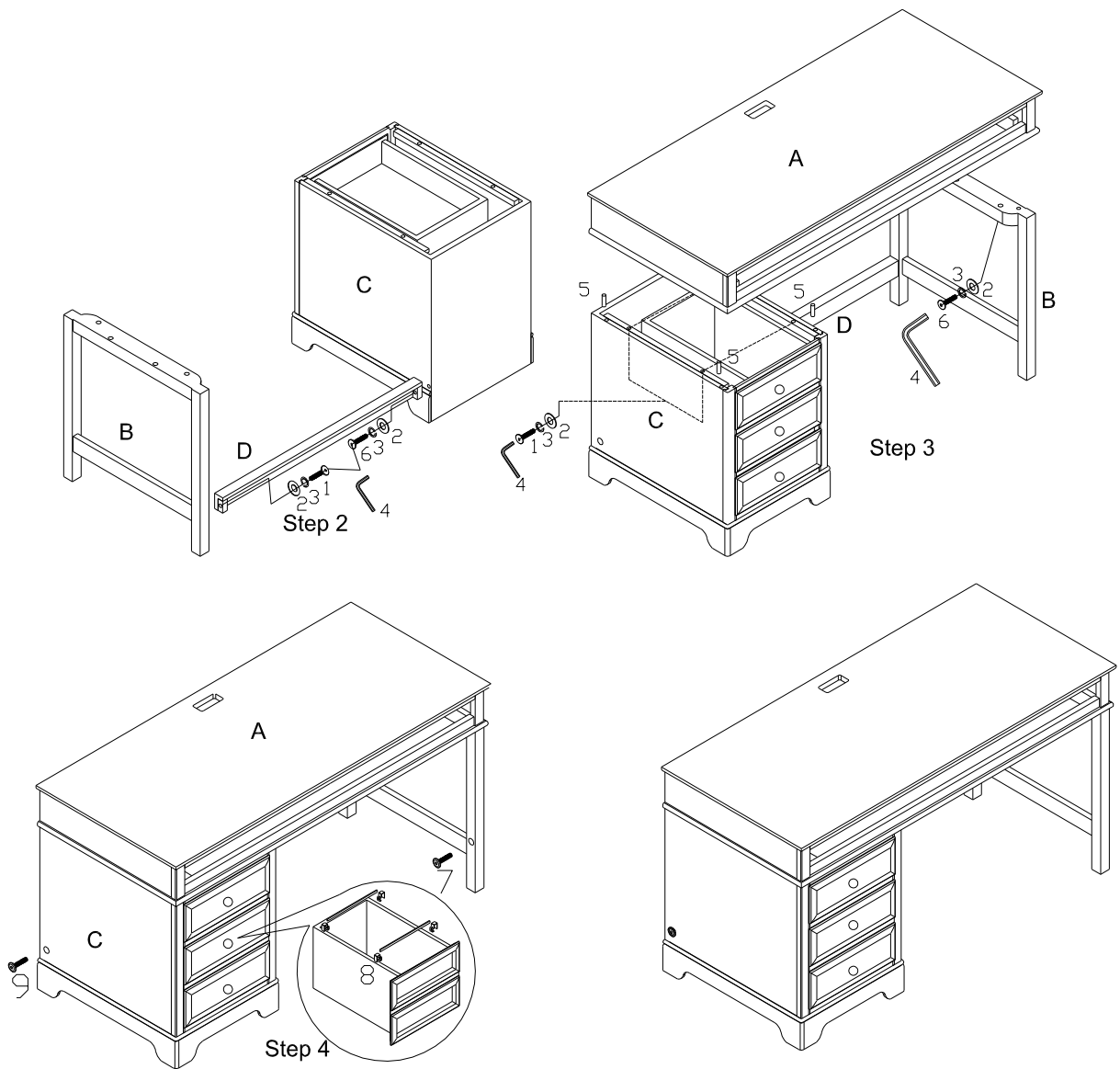
Step 1: Unpack, inspect, and read assembly instruction carefully. Lay out the parts and hardware. Make sure the quantity of each is correct.

Step 2: Attach the connecting rail (D) to the drawer chest (C) with lock washer (3), flat washer (2) and long bolt (6). Repeat to install the side frame (B) to the connecting rail (D) with lock washer (3), flat washer (2) and bolt (1). Tighten all the bolts (1, 6) by wrench (4). **Note:** The side frame (B) and drawer chest (C) can be interchangeable both sides.










Step 3: Insert the dowels (5) into the pre-drilled holes on the corners of the drawer chest (C) and side frame (B). Put the top (A) onto the drawer chest (C) and side frame (B) as shown. Tighten all bolts (1, 6) by wrench (4).

Step 4: Attach the file hooks (8) onto the drawer sides of the bottom drawer. Take out the file bars (F) from the bottom drawer and attach to the file hooks (8) as shown. **Note:** If you assemble the drawer chest (C) on the left side, then insert the short bolt (7) into the right side, insert the bolt (9) into the left side; if you assemble the drawer chest (C) on the right side, then insert the short bolt (7) into the left side, insert the bolt (9) into the right side.

Assembly is now complete.



HARDWARE PACK

1	BOLT	 BLACK 5/16"×1-3/8"	5 PCS	5	DOWEL	 7×40mm	8 PCS
2	FLAT WASHER	 5/16"	10 PCS	6	LONG BOLT	 5/16"×2-1/4"	5 PCS
3	SRPING WASHER	 5/16"	10 PCS	7	SHORT BOLT	 5/16"×1/2"	1 PC
4	ALLEN WRENCH	 70×30×5mm	1 PC	8	FILE HOOK		4 PCS
9	BOLT	 NICKEL OR ANTIQUE 5/16"×1-3/8"	1 PC				